

FOR HOLOSUN 507K FOOTPRINT RED DOT SIGHTS:

Included hardware:

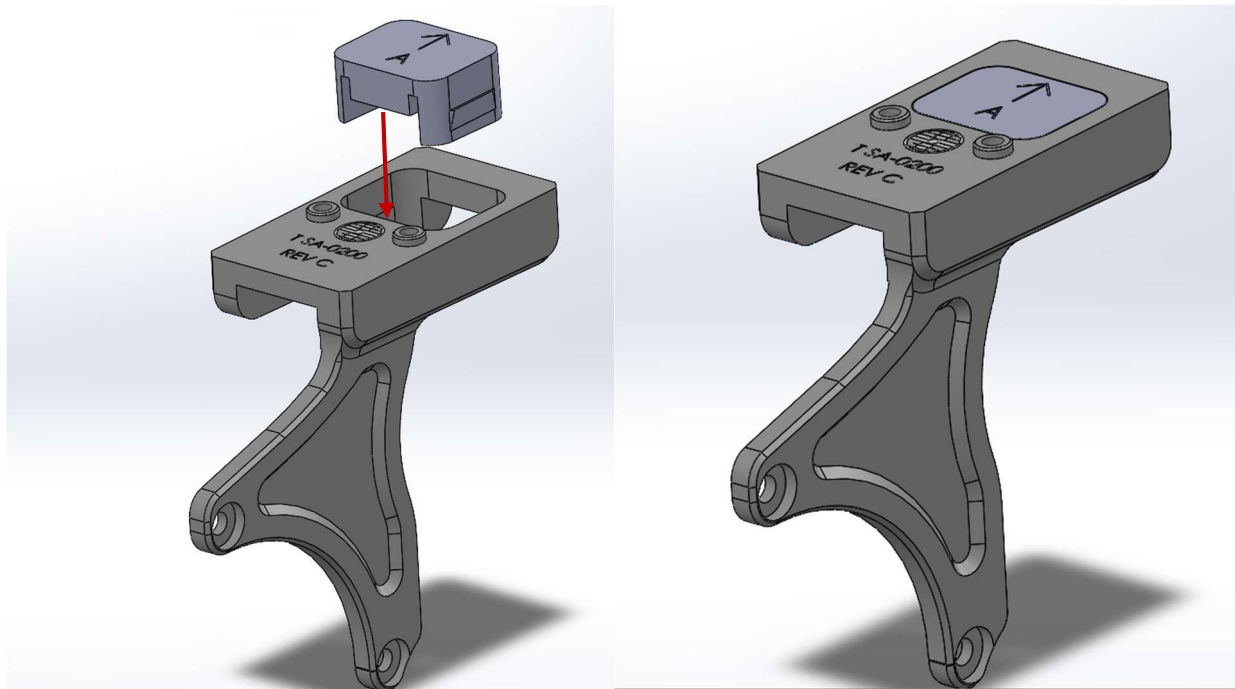
- 1X Revolver Optic Conversion (R.O.C) – HOLOSUN 507k Base
- 1X Teflon Top Spacer - A (For .38 Caliber S&W - 442, 642, 432, 351C)
- 1X Teflon Top Spacer – B (For .22 Caliber S&W – G43C)
- 2X 0.015” R.O.C Spacer
- 2X 5-44 UNF Button Head Screws (Torx 10 Drive)

Required Tools:

- Torx 10 Screwdriver
- Single Use Blue Loctite
- Small Flathead Screwdriver
- Torque Driver (0-25 Inch Pounds or equivalent)

PRE-INSTALLATION OF TOP SPACER:

Choose the correct **Top Spacer** according to the supported models listed above for your revolver and insert the spacer into the **R.O.C.** from above with the arrow pointing forward. Press the **Top Spacer** down into the opening on the top of the **R.O.C.** until the top of the spacer is flush with or below the top of the **R.O.C.** and it snaps into place. Proceed to installing the **R.O.C.** on your Revolver.



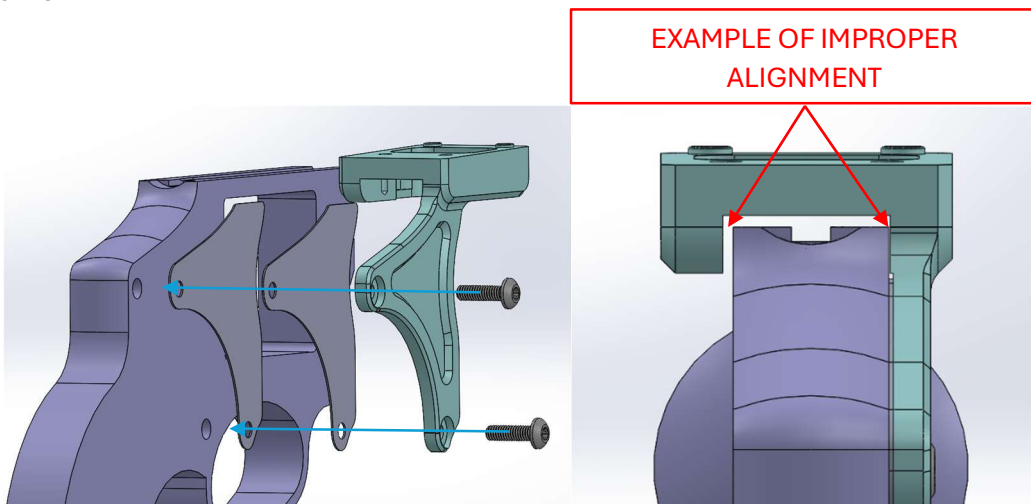
STEP 1:

Using a small flathead screwdriver, remove the two screws on the side of your S&W 442 J-Frame Revolver shown here and place them aside for safe keeping.

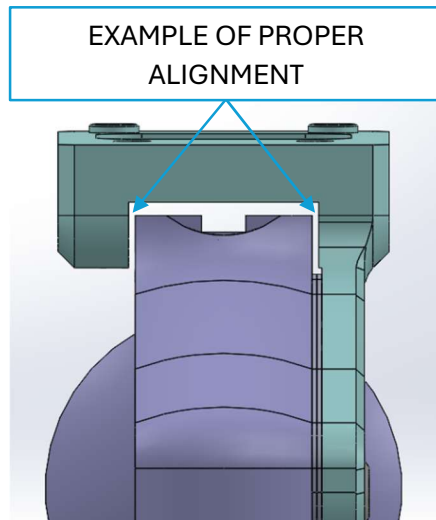


STEP 2:

Visually determine whether you will need 1 or both of the included **0.015" R.O.C Spacers**. To do this, first line up one of the spacers with the frame of your S&W 442 J-Frame Revolver using the two screw holes as a guide. Then partially install the **R.O.C Base**, holding it flush against the mating side of the revolver with the spacer in-between. If the top portion of the **R.O.C. Base** is centered over the barrel, then proceed to the next step and finish installation.

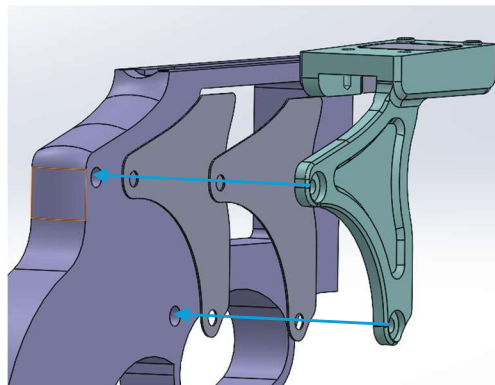


If the top portion of the **R.O.C. Base** is not centered, remove the **R.O.C. Base** and add the second included **0.015" R.O.C. Spacer**. The top of the **R.O.C. Base** should be centered over the top of the barrel. Proceed to the next step and finish installation.

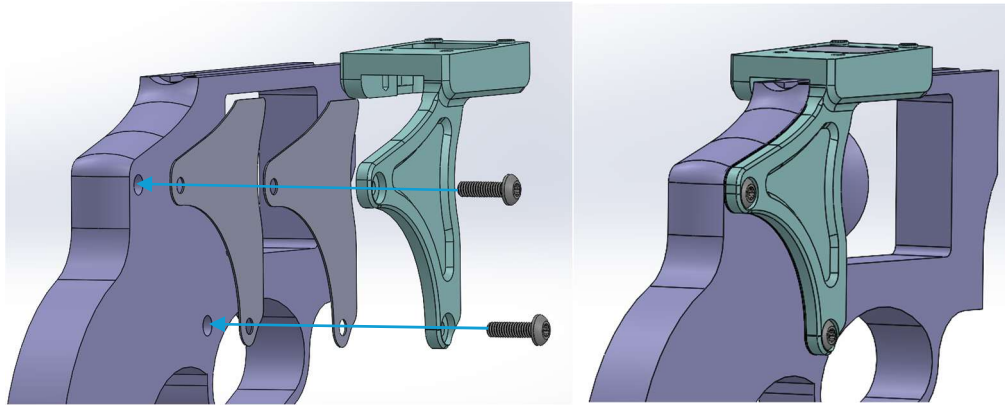


STEP 3:

Ensure the **0.015" R.O.C. Spacer(s)** and **R.O.C. Base** are lined up with the screw holes shown here:

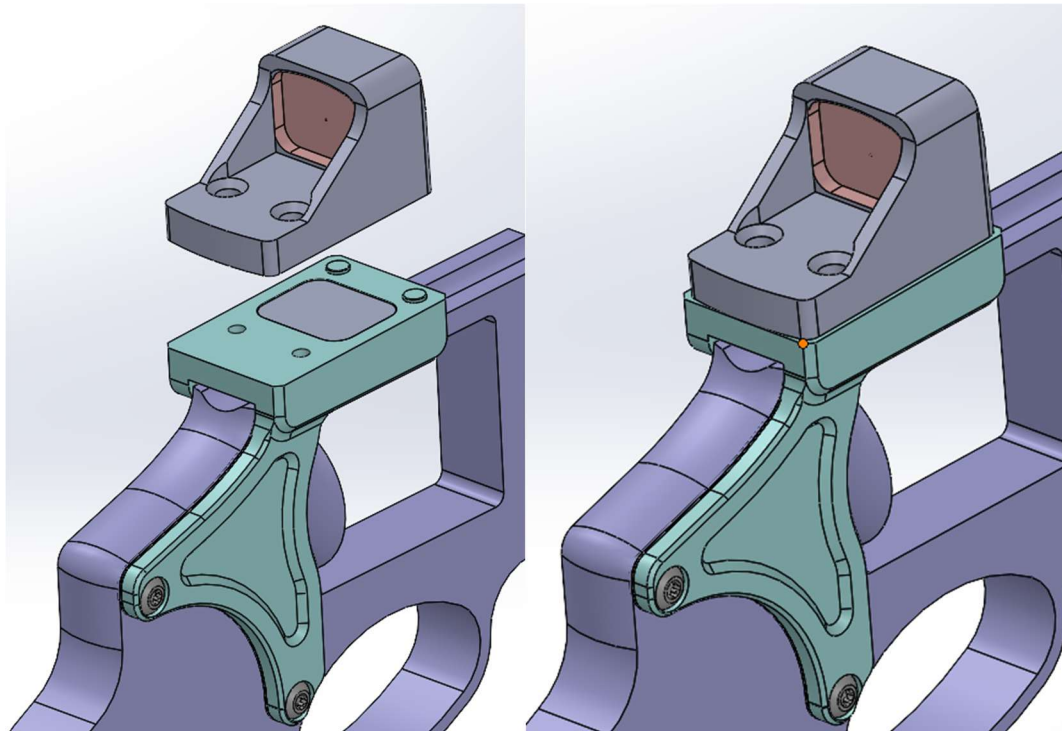


Place a small amount (one to two drops) of **BLUE LOCTITE** on each screw before inserting and tightening to 15 in/lbs. It is recommended that you wait the full 24 hours for the **BLUE LOCTITE** to completely cure before firing your firearm after installation.



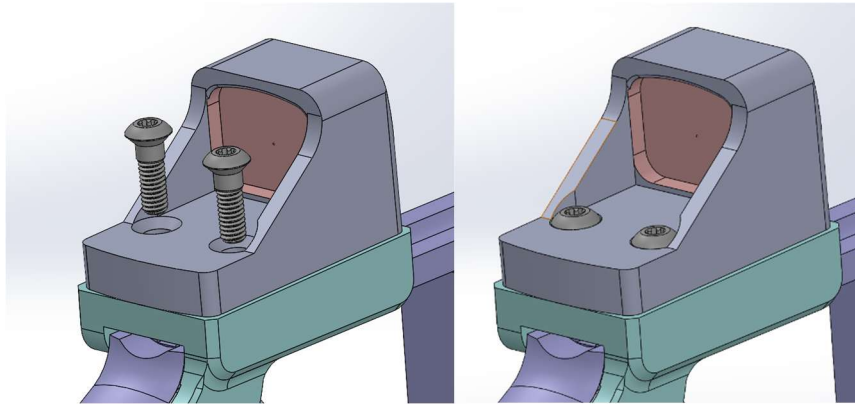
STEP 4:

Locate and place your HOLOSUN 507k Optic onto the top of the **R.O.C. Base** as shown:



STEP 5:

Attach the optic to the **R.O.C. Base** as shown. Add 2-3 drops of the included **Blue Loctite** to the threads of the **M4 Optic Screws** included with your optic, and tighten each screw to 15 in/lbs:



Installation is now complete!